

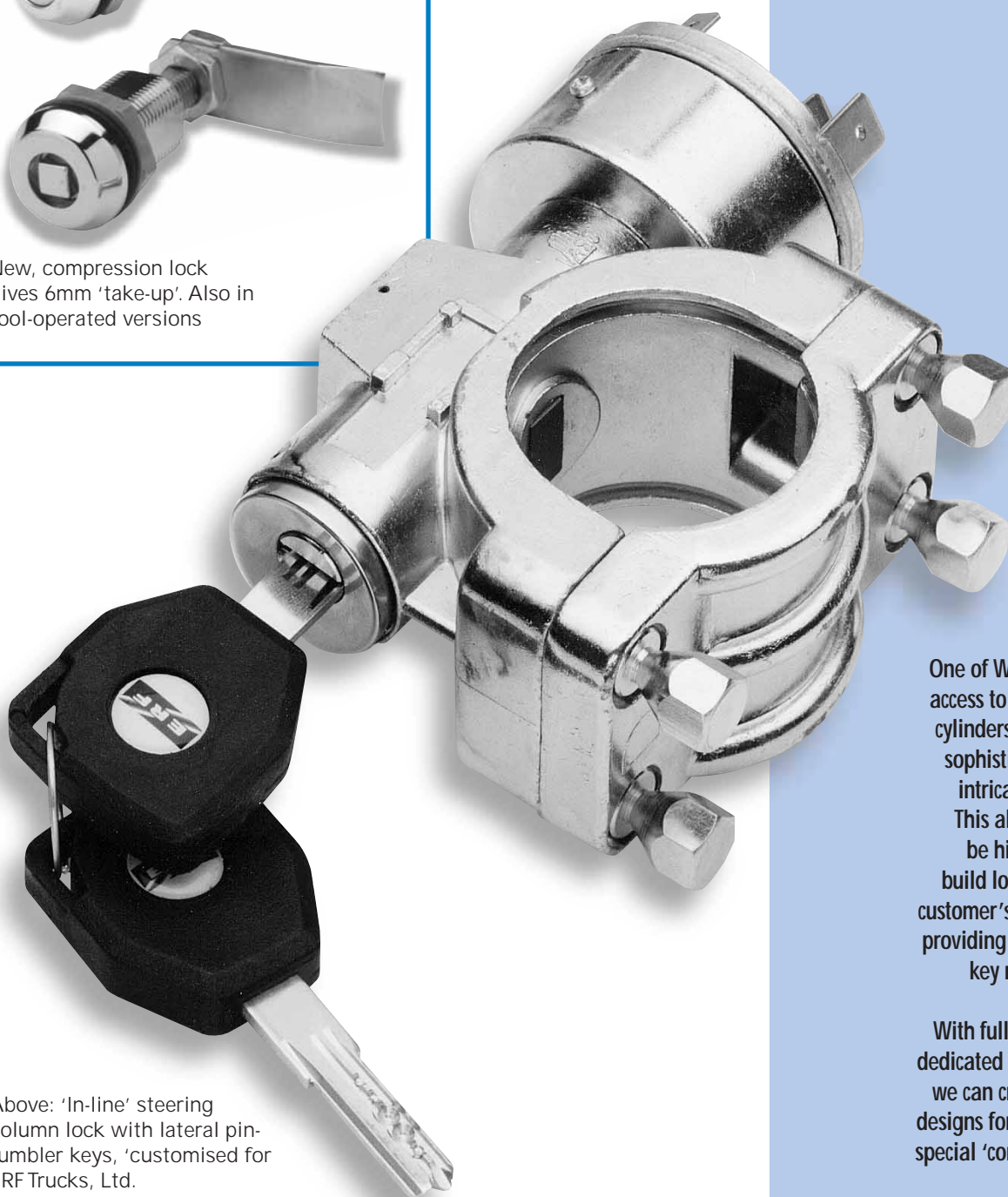
LOCKS

SMALL LOCKS,
LOCK CYLINDERS,
IGNITION LOCKS

**NEW
PRODUCT**



New, compression lock
gives 6mm 'take-up'. Also in
tool-operated versions



Above: 'In-line' steering
column lock with lateral pin-
tumbler keys, 'customised for
ERF Trucks, Ltd.

One of WBH's strengths is the access to a wide range of lock cylinders, manufactured from sophisticated tooling for the intricate castings involved. This allows the company to be highly flexible, able to build locking products to the customer's exact specifications, providing lock sets and special key numbers as required.

With full design facilities and dedicated diecasting resources, we can create altogether new designs for locking products for special 'contract' requirements.



Double-sided "FT"
keys only

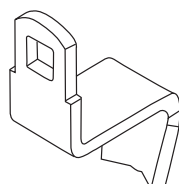
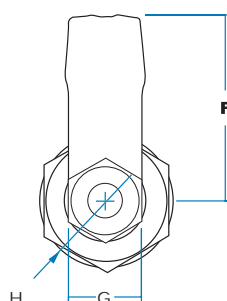
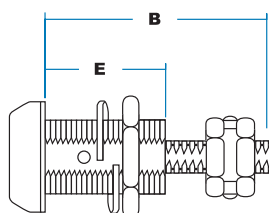
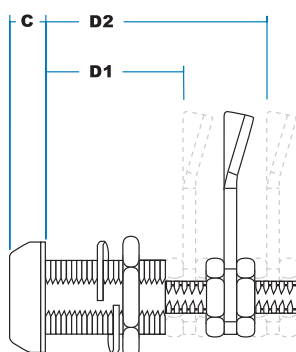
9/02300
compression lock,
with straight latch bar,
shown in fully-extended
'open' position

ORDERING CODE

9/02300	Compression lock, chrome
9/02300/01	as above, FT111
9/02300B	Compression lock, black
9/02300B/01	as above, FT111

SPECIFICATION

A	Head Diameter	29 mm
B	Total Depth (locked)	70 mm
C	Head projection	8 mm
D1	Depth to latch (min)	44 mm
D2	Depth to latch (max)	55 mm
E	Body depth	40 mm
F	Engagement	47.6 mm
G	Body across flats (square)	18.8 mm
H	Body diameter	22 mm
I	"Take-up" Depth	6 mm



Alternative latch bars
allow dimension D1 to
be reduced to 14mm –
See Page A14 for
options available.

KEY-OPERATED COMPRESSION LOCKS

A new lock design,
intended for use with gasketed
doors, which provides 6mm of
compression to make a firm seal.
It is water-resistant, fully
adjustable, and is mounted within
an industry-standard 4-sided panel
aperture. Straight latch as standard,
with a full range of other
bars available.



Very positive engagement,
water-resistant and adjustable.



Key brings latch bar into 'closed'
position, then draws-up bar by 6mm
against seal.



Key turns clockwise through 90 degrees
to operate latch, then through a further
quarter-turn to compress against door-
edge or striker. Latch bar is adjustable
through 11mm.



Fix through industry-standard 4-sided
aperture with brass nut &
stainless spring-washer on threaded
body, and neoprene gasket. Latch-bar
secured by nut and locknut on threaded
spigot.



'FT' keys with shuttered keyway as
standard.



Chromium-plated as standard, optionally
black powder-coated.



Alternative latch bars. Special key
numbers



WBH design covered by UK Patent
Application 0224237.8



Highly cost-effective against market
alternatives.



9/00114B



9/00729

Diecast key has recess for customer logo disc, and can be finished in black or other colours to special order.

TOOL-OPERATED COMPRESSION LOCKS

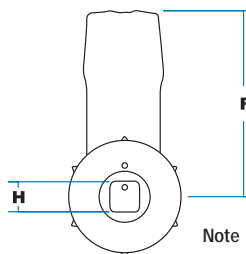
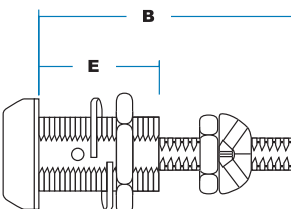
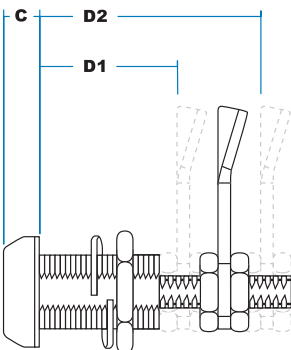
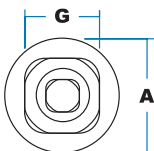
A model intended for use with heavy gaskets and seals, so that when locked the latching bar is drawn up by 6mm and is held firmly in place. Water sealed, fully adjustable, and mounting to industry-standard 4-sided panel aperture. Smart diecast key with provision for customer's identity logo.

ORDERING CODE

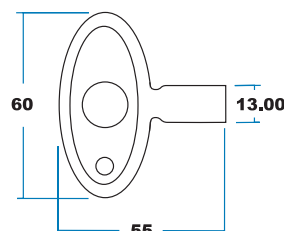
9/00114	Compression lock, chrome
9/00114B	Compression lock, black
9/00729	Diecast key, plain

SPECIFICATION

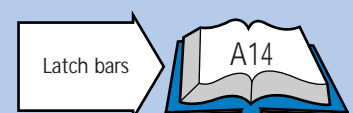
A	Head Diameter	29 mm
B	Total Depth (locked)	65.5 mm
C	Head projection	8 mm
D1	Depth to latch (min)	36 mm
D2	Depth to latch (max)	56.4 mm
E	Body depth	32 mm
F	Engagement	47.6 mm
G	Body across flats (square)	18.8 mm
H	Plug size	7 mm
I	"Take-up" Depth	6 mm



Note : Dots and latch bar to line up when in compressed position



- Very positive engagement against vibration, water-sealed and adjustable.
- Key operates plug, bringing latch into "closed" position and then drawing up against seal.
- Latching bar is rotated 90 degrees only, then withdraws by 6mm. Adjustment of latch through 20mm.
- Through industry-standard 4-sided aperture, secured by brass nut & stainless spring washer on threaded body. Latch bar secured by nut and locknut on end-spigot.
- 7mm-square drive plug
- Black or chromium-plated.
- Other drive plugs (triangular, slotted, etc). Alternative latch bars
- WBH design covered by UK Patent Application 0224237.8



'FT' Keys
Optional



7/01905
Locating plate



1/27893

ORDERING CODE

'De-luxe' specification

1/27890 'Deluxe' lock, 90°, mixed keys

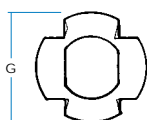
1/27893 'Deluxe' lock, 90°, FS 880

1/27900 'Deluxe' lock, 180°, mixed keys

1/27902 'Deluxe' lock, 180°, FS 880

7/01905, spiked locating plate
for fitting to wooden panels

Panel-piercing detail



G Diameter, locating plate 34 mm

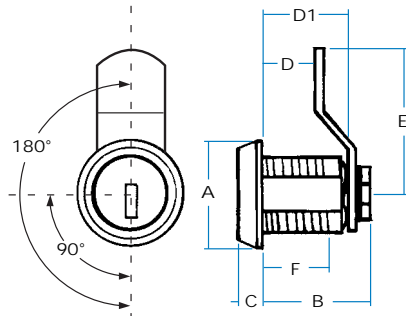
H Piercing, across flats 17.5 mm

J Piercing, diameter 20 mm

Locating plate enables lock to be fitted into a round hole, especially with wooden panels. Latch bar must be removed for mounting

SPECIFICATION

For clarity, retaining nut is not shown



A Head diameter 26 mm

B Total depth 28 mm

C Head projection 6 mm

D Depth to cranked latch 11 mm

D1 Body depth 19 mm

E Height of bar 37 mm

F Thread depth 15 mm

latch bar reversible, can be fitted at 45° intervals.

COMPARTMENT LOCKS (19mm) - 'DE-LUXE' SPECIFICATION

These are simple, inexpensive locks used on all types of steel and metal enclosures, cabinets and panels. The diecast housing fits a 'double-D' piercing and is retained by a large hexagonal nut.

This is the original 'Wilmot Breedren' specification with several special features as noted. It is particularly suited for applications where vibration may be a problem.



Hex-bolt, lockwasher and device retention clip for secure assembly, spiked locating plate and 'cranked' latch bar as standard (illustrated). Chromium-plated.



90° or 180° rotation as shown. Note that key does not withdraw in unlocked (9 o'clock) position with 90° models.



'FS' keys as standard with 'shuttered' keyway. Optionally 'FT', '92' or 'DLP' key types.



Wide choice of latch bars, finish options and accessory items. Special key numbers or sets on request.

ACCESSORY ITEMS

Illustrated here are some useful add-on accessory items for our compartment lock range.



7/01905 Locating plate, spiked

5/00479 Locating plate, flat (steel)



9/00858
Finger-pull

Black, moulded design which improves access to cabinet door. Suits all models



9/00066
Finger-pull

Chromium-plated, steel finger-pull for 'utility' applications.



9/00929
Moulded weathershield

Black PVC cover for weather-protection. Suits all round-face locks. (Also see A6)



5/01595
Moulded spacer

Useful where inside space is limited, raises lock 5mm above panel surface. Black nylon.



9/00103

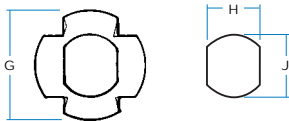
ORDERING CODE

'Standard' specification

9/00107	Compartment lock, 90°, mixed keys
9/00103	Compartment lock, 90°, FS 880
9/00108	Compartment lock, 180°, mixed keys
9/00105	Compartment lock, 180°, FS 880

7/01905, spiked locating plate
for fitting to wooden panels

Panel-piercing detail

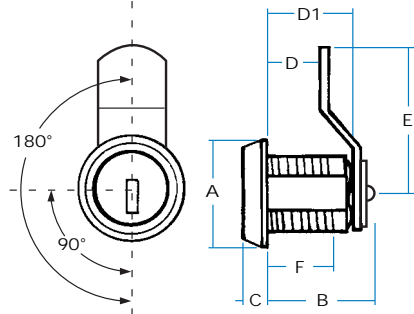


G	Diameter, locating plate	34 mm
H	Piercing, across flats	17.5 mm
J	Piercing, diameter	20 mm

Locating plate must be ordered separately with this specification.

SPECIFICATION

For clarity, retaining nut is not shown



A	Head diameter	26 mm
B	Total depth	27 mm
C	Head projection	6 mm
D	Depth to cranked latch	11 mm
D1	Body depth	19 mm
E	Height of bar	37 mm
F	Thread depth	15 mm

latch bar reversible, can be fitted at 45° intervals.

COMPARTMENT LOCKS (19mm) STANDARD SPECIFICATION

Identical in most details to the 'deluxe' models, these locks have a simplified specification which enables them to be installed without need for dismantling latch bar.



90° or 180° rotation as shown. Note that key does not withdraw in unlocked (9 o'clock) position with 90° models.



'FS' keys as standard with 'shuttered' keyway. Optionally 'FT', '92' or 'DLP' key types.



Chromium-plated as standard: black or zinc-plated to order.



Wide choice of latch bars, finish options and accessory items. Special key numbers or sets on request.

'SHORT BODY' LOCKS (13mm)

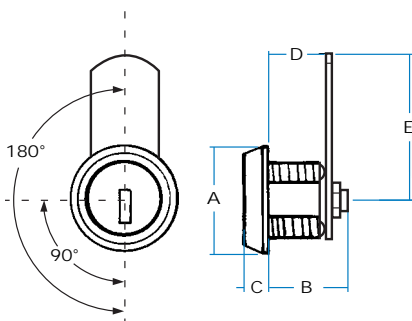
Use these locks where depth is restricted, since body length is 7mm less than standard. It can be further reduced with optional moulded spacer under head.



90° or 180° rotation as shown. Note that key does not withdraw in unlocked (9 o'clock) position with 90° models.



'FS' keys only, with 'shuttered' keyway.



SPECIFICATION

A	Head diameter	26 mm
B	Total depth	20 mm
C	Head projection	6 mm
D	Depth to latch	13 mm
E	Height of bar	35 mm

Latch bar must be removed for mounting.

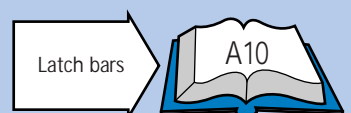


7/22931

ORDERING CODE

7/22932	'Short body' lock, 90°, mixed keys
7/22932/01	'Short body' lock, 90°, FS 880
7/22931	'Short body' lock, 180°, mixed keys
7/22931/04	'Short body' lock, 180°, FS 880

Flat latch bar as standard, can be fitted at 45° intervals: Order locating plate separately.





'FT' Keys
Optional



7/01905
Locating plate

7/25250

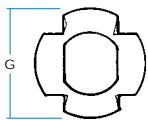
ORDERING CODE

7/25250 19 mm lock, 90°, mixed keys

7/25250/01 19 mm lock, 90°, FS 880

7/1905, spiked locating
plate for wooden panels

Panel-piercing
detail



Offset aperture by
45° to compensate
for orientation
of keyway

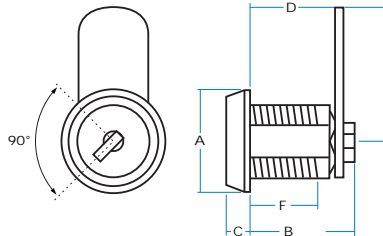
G Diameter, locating plate	34 mm
H Piercing, across flats	17.5 mm
J Piercing, diameter	20 mm

Locating plate enables lock to be fitted into a round hole.

Latch bar must be removed for mounting.

SPECIFICATION

For clarity, retaining nut is not shown



A Head diameter	26 mm
B Total depth	28 mm
C Head projection	6 mm
D Depth to latch	19 mm
E Height of bar	35 mm
F Thread depth	15 mm

Latch bar can be fitted at 45° intervals.

COMPARTMENT LOCKS (19mm) WITH 90° KEY- WITHDRAWAL

These are special models with 90° rotation, but in which keys can be withdrawn in both locked and unlocked positions. All details are as the 19mm 'de-luxe' specification, with spiked locating plate provided, but with straight latch bar as standard.



Keyway is oriented at 45° to 'flats' on body: adjust panel-piercing to compensate or use round hole with spiked locating plate.



'FS' keys as standard with 'shuttered' keyway. Optionally 'FT', '92' or 'DLP' key types.



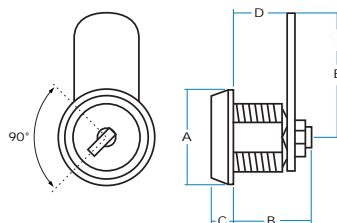
Wide choice of latch bars, finish options and accessory items. Special key numbers or sets on request.

'SHORT BODY LOCKS' (13mm) WITH 90° KEY- WITHDRAWAL

Also with 90° key-withdrawal, these locks have overall length at 7 mm less than standard. It can be further reduced with optional moulded spacer



'FS' keys only.



9/00927

ORDERING CODE

9/00927 13 mm lock, 90°, mixed keys

9/00927/01 13 mm lock, 90°, FS 880

Flat latch bar as standard, can be fitted at 45° intervals.

Order locating plate separately

SPECIFICATION

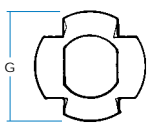
A Head diameter	26 mm
B Total depth	20 mm
C Head projection	6 mm
D Depth to cranked latch	13 mm
E Height of bar	35 mm



ORDERING CODE

9/00589	30 mm lock, 90° mixed keys
9/00589/01	30 mm lock, 90°, FS 880
9/00590	30 mm lock, 180°, mixed keys
9/00590/01	30 mm lock, 180°, FS 880

7/1905, spiked locating plate for wooden panels Panel-piercing detail

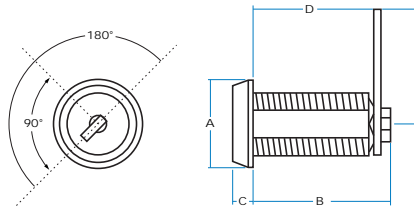


Offset aperture by 45° to compensate for orientation of keyway

G	Diameter, locating plate	34 mm
H	Piercing, across flats	17.5 mm
J	Piercing, diameter	20 mm

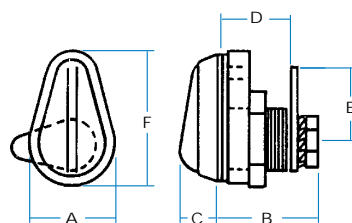
SPECIFICATION

For clarity, retaining nut is not shown



A	Head diameter	26 mm
B	Total depth	35 mm
C	Head projection	8 mm
D	Depth to latch	30 mm
E	Height of bar	35 mm

Latch bar can be fitted at 45° intervals and must be removed for mounting



ORDERING CODE

7/08996	'Weathershield' lock, 90°, 'FS'
7/08996/01	'Weathershield' lock, 90°, FS 880
9/00849	'Weathershield' lock 90°, 'FT'
Special latch bar 7/08995 fits at 90° intervals. 180° rotation to special request.	

SPECIFICATION

A	Max. width (face)	25 mm
B	Total depth	27 mm
C	Head projection	12 mm
D	Depth to latch	19 mm
E	Height of bar	20 mm
F	Max height (face)	38 mm

6
A

'LONG BODY' LOCKS (30mm) with 90° KEY-WITHDRAWAL

With extended body depth to 30 mm, these locks are ideal for thick panels (chipboard, composites), and keys can be withdrawn in locked and unlocked positions with both 90° and 180° models.

Locks have 'shuttered' keyway for weather protection, with spiked locating plate and straight latch bar.



Keyway is oriented at 45° to 'flats' on body: adjust panel-piercing to compensate or use round hole with spiked locating plate..



'FS' keys as standard with 'shuttered' keyway. Optionally 'FT', '92' or 'DLP' key types.



Wide choice of latch bars, finish options and accessory items. Special key numbers or sets on request.

'WEATHERSHIELD' LOCKS - FOR EXTERIOR USE

A special model, with pivoted diecast cover which protects keyway against dust and water. Normally 90° operation with key withdrawing in both positions. Chrome, with 'FS' or 'FT' keys and full choice of latch bars.



A special piercing is required. Diecast spacer is provided for fitting above or below panel surface as required

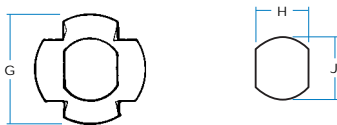


ORDERING CODE

9/00112	'Tri-lock', all-black
9/00113	'Tri-lock', chrome
9/00129	Key for tri-lock, steel
9/00612	Square-drive lock, black
9/00613	Square-drive lock, chrome
9/00629	Key for square-drive lock

7/1905, spiked locating
plate for wooden panels

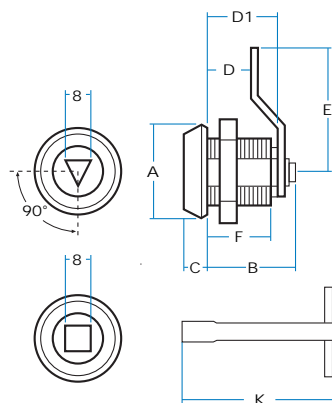
Panel-piercing
detail



G	Diameter, locating plate	34 mm
H	Piercing, across flats	17.5 mm
J	Piercing, diameter	20 mm
K	Special keys, length	62 mm

Locating plate must be ordered separately with this specification. Latch bar reversible, can be fitted at 45° intervals.

SPECIFICATION



A	Head diameter	26 mm
B	Total depth	27 mm
C	Head projection	6 mm
D	Depth to cranked latch	12 mm
D1	Body depth	19 mm
E	Height of bar	37 mm
F	Thread depth	15 mm

'TRI-LOCKS' & SQUARE-DRIVE LOCKS (19mm)

(1/4-TURN FASTENERS)

Attractive locks for low-cost security, using housings and fittings interchangeable with key-operated models.

Two styles are available, with either 8 mm-square or triangular plug, with keys to match. Both are suitable for exterior use and can be water-sealed to IP55 if required.



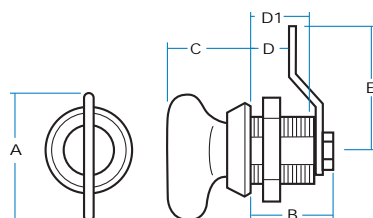
90° rotation as shown. To special order locks can travel through 180°.



All-black as standard, or with chromium-plated housing. Optionally, bright zinc-plated for lowest cost.



Wide choice of latch bars, finish options and accessory items.



SPECIFICATION

A	Height of key	32 mm
B	Total depth	20 mm
C	Head projection	25 mm
D	Depth to cranked latch	6 mm
D1	Body depth	13 mm
E	Height of bar	37 mm

ORDERING CODE

9/00123 Fixed-key lock, black & chrome.

Locating plate must be ordered separately with this specification.



'FIXED-KEY' PANEL FASTENER

A useful 'quarter-turn' fastener with a diecast turn-key permanently retained in the housing, making it useful for interior cabinets, inspection panels, etc. Black key within chrome housing.



Wide choice of latch bars, finish options. 180° rotation and other lengths to special order.



7/35310 (19mm)



9/01385 (30mm)



9/01109 (19mm)



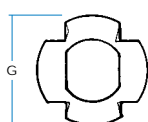
9/01110 (30mm)

ORDERING CODE

7/35310	'Coin-op' lock, 19 mm
9/01385	'Coin-op' lock, 30 mm
9/01109	Recess-square lock, 19 mm
9/01110	Recess-square lock, 30 mm
9/00726	T-key for recess-square locks

7/1905, spiked locating plate for wooden panels

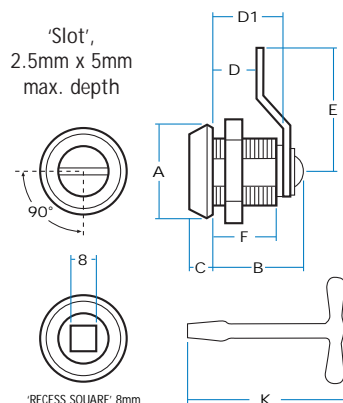
Panel-piercing detail



G	Diameter, locating plate	34 mm
H	Piercing, across flats	17.5 mm
J	Piercing, diameter	20 mm
K	T-key, length	62 mm

Locating plate must be ordered separately with this specification. Latch bar reversible, can be fitted at 45° intervals.

SPECIFICATION



A	Head diameter	26 mm
B	Total depth	27 mm/38 mm
C	Head projection	6 mm
D	Depth to cranked latch	12 mm/23 mm
D1	Body depth	19 mm/30 mm
E	Height of bar	37 mm
F	Thread depth	15 mm/30 mm

TOOL-OPERATED COMPARTMENT LOCKS

(1/4-TURN FASTENERS)

Two styles of 'quarter-turn' fasteners, using standard housings and fittings so they are interchangeable with key-operated models. Both are available in 19 mm & 30 mm lengths.

The 'recess-square' design allows relatively high turning force to be applied (using the 8 mm T-key). The 'coin-op' model is used as a convenient catch, opened with almost any coin or screwdriver blade.



90° rotation as shown. To special order locks can travel through 180°.



Bright chromium-plated as standard. Optionally, black or bright zinc-plated.



Wide choice of latch bars, finish options and accessory items.



9/00858
Finger-pull

Black, moulded design which improves access to cabinet door. Suits all models



9/00929
Moulded weathershield

Black PVC cover for weather-protection. Suits all round-face locks.





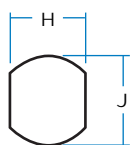
Double-sided 'FT' keys
as standard



9/01930

ORDERING CODE

9/01930	Low-profile lock, 90°, mixed keys
9/01930/01	Low-profile lock, 90°, FT 111
9/01931	Low-profile lock, 180°, mixed keys
9/01931/01	Low-profile lock, 180°, FT 111

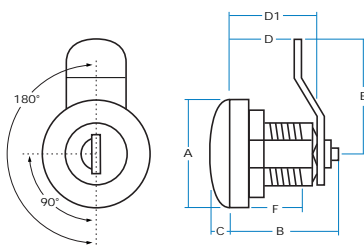


'Type 2' piercing
This larger aperture
also suits our 'easy-
fix' range of handles.

G	Diecast spacer (depth)	6 mm
H	Piercing, across flats	22 mm
J	Piercing, diameter	24 mm

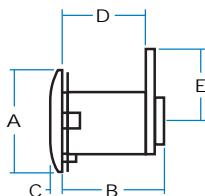
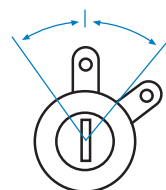
Latch bar reversible, can be fitted at 45° intervals.

SPECIFICATION



A	Head diameter	30 mm
B	Total depth	29 mm
C	Head projection	5 mm
D	Depth to cranked latch	15 mm
D1	Body depth	22 mm
E	Height of bar	37 mm
F	Thread depth	17 mm

7/24385 Spring
Fixing clip
(supplied with
locks)



1/29400-1
(Supplied as
pairs)

ORDERING CODE

1/29400-1	'Private' locks, LH/RH pair, complete with spring clip.
-----------	---

Request engineering drawing for panel cut-out dimensions.

SPECIFICATION

A	Head diameter	30 mm
B	Total depth	33 mm
C	Head projection	2 mm
D	Depth to bar	25 mm
E	Height to hole centre	16 mm

9
A

LOW-PROFILE COMPARTMENT LOCKS

A new model, designed with a "shuttered" cylinder for weather protection but with a wider, lower head style for enhanced appearance. Larger panel-piercing to match our 'easy-fix' handles, with nut-fixing for latch bar. A neoprene gasket and diecast spacer are provided. Finish is bright chromium-plated.



90° or 180° rotation as shown. Key will withdraw in unlocked (9 o'clock) position with 90° models.



'FT' keys as standard with 'shuttered' keyway. Optionally 'FS', '92' or 'DLP' keys.



Wide choice of latch bars, finish options. Special key numbers or sets.

VEHICLE 'PRIVATE' (DOOR) LOCKS

Used with non-locking exterior handles (see B25), these locks have very low profile and twin-lobed operating bar. Supplied as pairs, LH/RH, chromium-plated, 'FT' keys only.



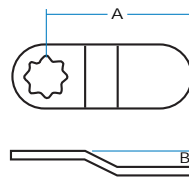
Key enters and withdraws vertically with 'lost motion' allowed, and 45° movement of bar to each side of rest position.



Mount in special pierced aperture and secure from inside with spring clip. Gasket provided.



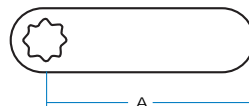
'Cranked'
Latch Bars



Part number	A	B
7/01906	36mm	8mm
9/00033	30mm	4mm



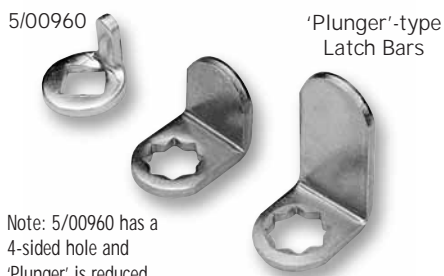
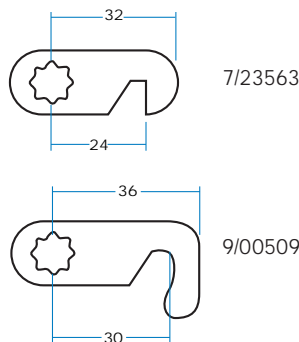
'Straight'
Latch Bars



Part number	A
9/00526	23mm
7/03640	35mm
7/35232	51mm
5/00458	76mm

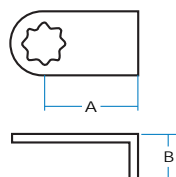


'Hooked'
Latch Bars



'Plunger'-type
Latch Bars

Note: 5/00960 has a 4-sided hole and 'Plunger' is reduced to 6mm width.

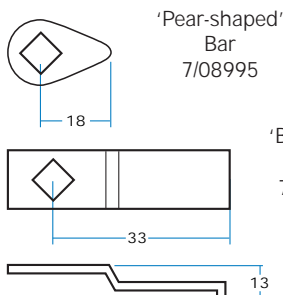


Part number	A	B
5/00960	8mm	14mm
5/02051	10mm	13mm
5/01907	13mm	17mm
5/00474	10mm	30mm



'Special'
Latch Bars

Note: These latch bars have 4-sided hole only.



'Blocking'
Bar
7/23709

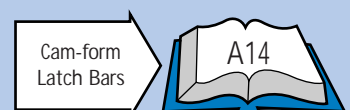
O T A

LATCH BAR OPTIONS FOR COMPARTMENT LOCKS

These are some of the more commonly-used latch bars for our compartment lock range. All are made in mild steel, 15 mm x 2.2 mm, and zinc-plated, with an 8-sided hole to accept 8 mm-square drive (unless otherwise noted). All are reversible.

Standard lock models are normally fitted with the 'cranked' bar (7/01906) or the 'straight' bar, (7/03640). However, any of these options can be provided on request, and special bars made to order where volumes are appropriate.

A range of 3 mm heavy-duty bars with raised cam-form is also available and is shown separately.





'FT' Keys
Optional



Single-sided 'FS'
keys are standard



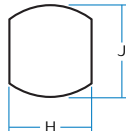
9/00935
'Compact'
Handle

ORDERING CODE

9/00935	Compact, chrome, 90° LH
9/00938	As above, FS 880 keys
9/00936	Compact, chrome, 90° RH
9/00939	As above, FS 880 keys
9/00937	Compact, chrome, 180°
9/00937/01	As above, FS 880 keys

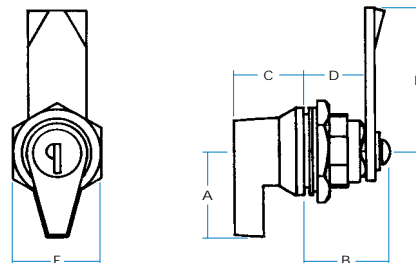
Panel-piercing detail

This larger aperture also suits our 'easy-fix' range of 'L' & 'T' handles



H Piercing across flats	22 mm
J Piercing, diameter	24 mm

SPECIFICATION



A Face length	40 mm
B Body depth	29 mm
C Face height	25 mm
D Depth to latch	19 mm
E Height of latch	48 mm
F Face width	30 mm

Latch bar can be fitted at 90° intervals

Latch-bar options

Straight bar is fitted as standard

5/00276
Cranked 'up'
9.5mm



5/00275
'straight'

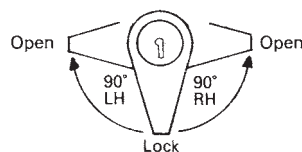


5/00097
Cranked 'down'
9.5mm



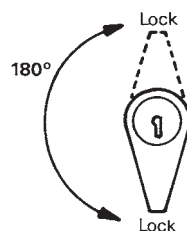
Straight latch bar is fitted as standard, with two options cranked 9.5 mm 'up' or 'down'. Lock will accept all other bars with 8 mm piercing, including 2/3-point options.

90° LH/RH MOVEMENT



Handles operate LH (clockwise) or RH (anticlockwise) but lock in vertical position only. Key does not withdraw in 'open' position.

180° MOVEMENT



Handles are non-handed and lock in both vertical positions, when key can be withdrawn.

'COMPACT' LOCKING HANDLE WITH 'EASY-FIX' MOUNTING

Our 'Compact' model takes very little more space than a compartment lock, but it removes the load from the key. With cam-formed latch (or rods) it can be used even on gasketed doors, and can be water-sealed if required.



Rotation is 90° LH or RH as shown, or 180°. Key operates only when handle is vertical but key withdraws in both top & bottom (locked) positions.



Insert from front into pierced aperture and fix with large hexagonal nut. Neoprene gasket and stainless spring washer are provided.



'FS' keys as standard with 'shuttered' keyway. Optionally 'FT' or 'DLP' key types.



Bright chromium-plated or black powder-coated.



- Cranked latch bars
- 2/3-point bars & rods
- Water-sealing to IP standards
- Special key numbers or sets.





Double-sided
'FT' Keys are
standard



9/01861

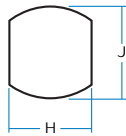
ORDERING CODE

9/01861 Turnbutton, chrome, 90° LH

9/01861/01 As above, FT111 keys

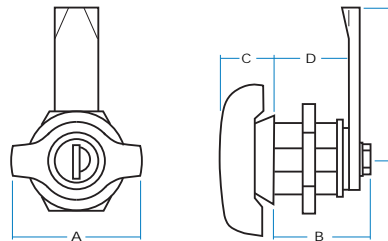
Panel-piercing detail

This larger aperture also
suits our 'easy-fix' range
of 'L' & 'T' handles.



H Piercing across flats	22 mm
J Piercing, diameter	24 mm

SPECIFICATION



A Face width	45 mm
B Body depth	37 mm
C Face height	14 mm
D Depth to latch	30 mm
E Height of latch	48 mm

Latch bar can be fitted at 90° intervals

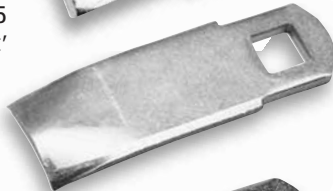
Latch-bar options

Straight bar is fitted as standard

5/00276
Cranked 'up'
9.5mm



5/00275
'straight'

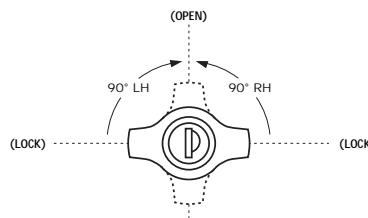


5/00097
Cranked 'down'
9.5mm



Straight latch bar is fitted as standard, with
two options cranked 9.5 mm 'up' or 'down'.
Lock will accept all other bars with 8 mm
piercing, including 2/3-point options.

90° LH MOVEMENT



Handles operate LH (clockwise) but lock in
horizontal position only. Key does not
withdraw in 'open' position.

'TURNBUTTON' LOW-PROFILE LOCK UNIT ('WING' HANDLE)

The 'turnbutton' lock is fitted with
a direct-action operating bar,
making it an extremely low-profile
handle for securing doors or for
driving rod mechanisms.



Rotation is 90° LH. Key operates only
when handle is horizontal, but key
withdraws in both locked positions.



Insert from front into pierced aperture
and fix with large hexagon nut.
Neoprene gasket and stainless spring
washer are provided.



'FT' keys as standard with 'shuttered'
keyway. Optionally 'FS' or 'DLP' key
types.



Bright chromium-plated or black
powder-coated.



- Cranked latch bars
- 2/3-point bars & rods
- Special key numbers or sets

Latch Bars

A14



Double-sided
'FT' Keys are
standard



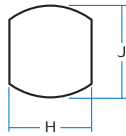
9/01875

ORDERING CODE

9/01875	Turnbutton, chrome, LH
9/01875B	Turnbutton, black, LH
9/00078	Connecting link rod, 1-metre
3/13390	Connecting clip
9/00138	Recess pan, black
5/00939	Gasket for recess pan

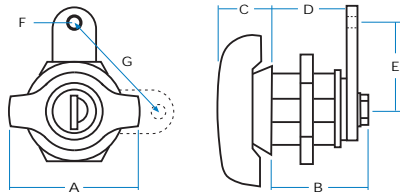
Panel-piercing detail

This larger aperture also
suits our 'easy-fix' range
of 'L' & 'T' handles



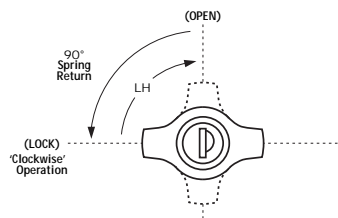
H Piercing across flats	22 mm
J Piercing, diameter	24 mm

SPECIFICATION



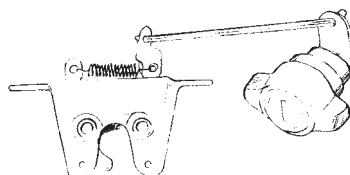
A Face width	45 mm
B Body depth	37 mm
C Face height	14 mm
D Depth to drive plate	30 mm
E Height to hole	20 mm
F Hole size	(dia) 4 mm
G Travel (max)	25 mm

DIRECTION OF MOVEMENT



Lock turns 90° in a clockwise direction, and is returned to horizontal by spring-action. It will only lock in the 'rest' position.

APPLICATION SCHEME



'Turnbutton' can be connected to operating trigger on our 'claw' latches (9/00283, etc.)

FULLY FLUSH-MOUNTING



Where surface projection is not desirable the 'turnbutton' can be fitted into our steel recess pan to provide a totally flush-mounted lock.

'TURNBUTTON' REMOTE- ACTION LOCK UNIT (SPRING-RETURN)

A very low profile design with
spring return, used to operate a
latch or mechanism which is
mounted remote from the lock itself.
It has been widely used as a vehicle
boot (trunk) and tailgate lock.



Turn lock through 90° LH to rotate drive plate and operate attached linkage. Spring returns turnbutton to horizontal position. Key turns through 180° to prevent movement and withdraws in both positions.



Insert from front into pierced aperture and fix with large hexagonal nut. Neoprene gasket and stainless spring washer provided.



'FT' keys as standard with 'shuttered' keyway. Optionally 'FS' or 'DLP' key types.



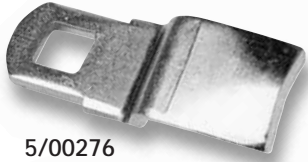
Bright chromium-plated or black powder-coated.



- Drive plate length/orientation
- 2-way connecting plate
- Can be used with our 'claw' and 'rotary' latches, or 'intermediary' unit, 1/29736.



Cam-form bars



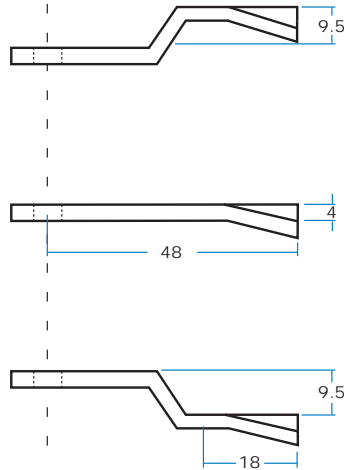
5/00276



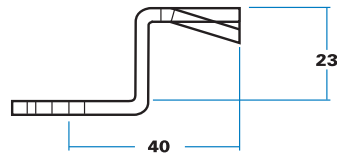
5/00275



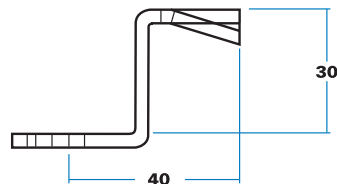
5/00097



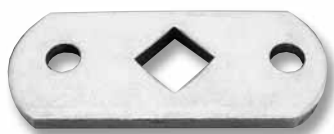
5/02706
Raised 23mm



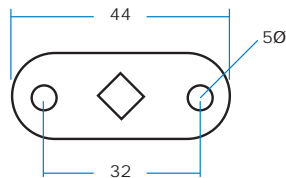
5/02721
Raised 30mm



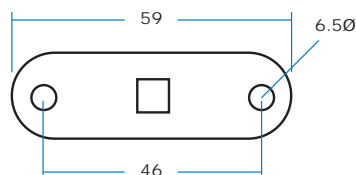
Two-point bars



5/00508 (illustrated)
5/01911 with in-line square



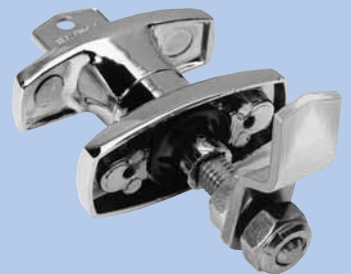
5/00789 (illustrated)
5/01389 with square at 45° to centre line



CAM-FORM & MULTI-POINT LATCH BARS

These bars are in 3 mm-thick mild steel, zinc-plated with 8 mm-square hole. Cam-form types have a 4 mm 'leading edge' for good engagement. They can be used with most of our compartment locks, 'Compact' and 'Turnbutton' models, and also with handles having 8 mm square shaft, as illustrated below.

Latch bar fitted to locking handles



The 8 mm shaft is threaded M10 so that square form is retained. Bar can be adjusted using nut (MP00221) and locknut (MP00220) illustrated



5/01464
Striker plate



Single-sided 'FS'
keys are standard

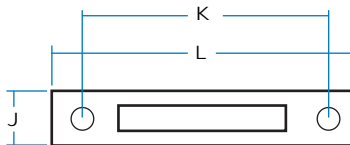


7/06433
Desk lock

ORDERING CODE

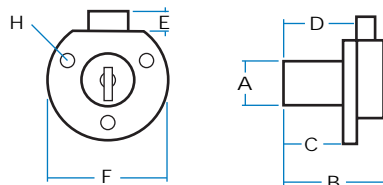
7/06433	Desk lock, chrome
7/06433/01	Desk lock, FS 880 keys
5/01464	Striker plate, chrome

Striker plate, 5/01464



J	Striker width	18 mm
K	Striker hole centres	40 mm
L	Striker length	50 mm

SPECIFICATION



A	Face diameter	19 mm
B	Body depth	29 mm
C	Head depth	17 mm
D	Depth to bolt	25 mm
E	Depth 'throw'	7 mm
F	Diameter	40 mm
H	Hole sizes	3 mm

'DESK LOCK' (KEY-OPERATED DEAD-BOLT)

Designed originally for wooden furniture, this is a key-operated 'deadbolt' lock (does not slam). It is a simple and inexpensive unit which can be used for any small cabinet or drawer.

Finish: chromium-plated.



Square-section bolt is thrown as key is turned through 180°. Key withdraws in both positions.



Insert from rear so that housing protrudes through round hole (20 mm dia). Secure through fixing holes in rear flange. Striker plate available.



'FS' keys only, non-shuttered.

'PUSH-BUTTON 'CUBBY' LOCK WITH SLAM-BOLT

This is a popular and well-proven 'cubby' lock, which slams shut and is opened by push-button action. Its small size and simple method of fixing makes it suitable for inspection windows, control boxes, etc.



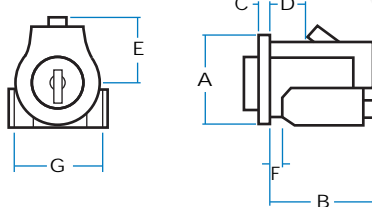
Lock slams against panel edge, opens with gentle pressure on front face. Key turns 90° to 'block' button.



Insert from front into special piercing, secure with brackets provided at rear. Suits panels up to 2mm (special brackets for thicker panels).

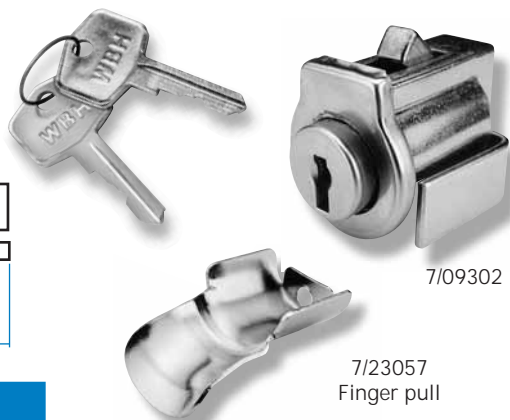


'FS' keys only, non-locking model available.



SPECIFICATION

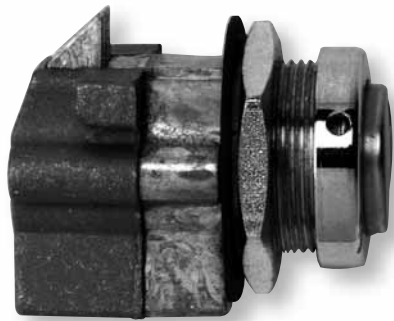
A	Face height	25 mm
B	Body depth	28 mm
C	Rim thickness	4 mm
D	Location to bolt	8 mm
E	Centre-line to bolt	15 mm
F	Tolerance (panel thickness)	2 mm
G	Body width	22 mm
Request drawing for panel-piercing.		



ORDERING CODE

7/09302	Cubby lock
7/09303	Cubby lock, FS 880
7/09280	Cubby lock, plain button
7/23057	Finger-pull, chrome

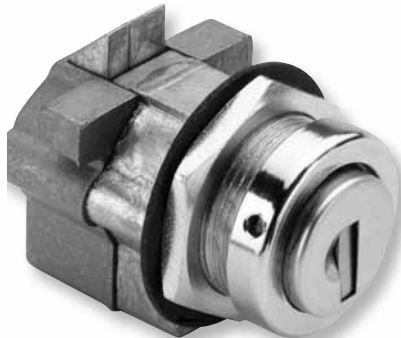
Note Finger-pull is optional and secures behind fixing-bracket. Finish is stainless steel (satin) or black to special order.



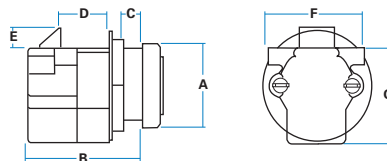
7/07290
showing bezel with holes for tightening
onto threaded 'neck'

ORDERING CODE

7/07290	Push-button lock, 'FS' keys
7/07290/01	As above, FS 880 keys
7/07291	Push-button lock, plain lock
Note: An earlier, similar lock was offered as 7/07289. Enquire about compatibility	

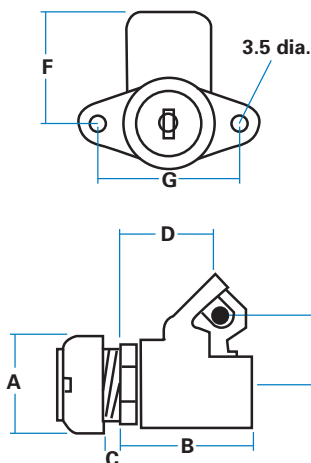


SPECIFICATION



A	Face diameter (bezel)	23 mm
B	Max. depth	31 mm
C	Tolerance (panel thickness)	up to 5 mm
D	Location to bolt	13 mm
E	Bolt travel	5.5 mm
F	Max. width	27 mm
H	Max Height	26 mm

Request drawing of panel-piercing required.



SPECIFICATION

A	Face diameter (bezel)	25 mm
B	Max. depth	27 mm
C	Tolerance (panel thickness)	up to 3 mm
D	Location to striker rod	23 mm
E	Centre-line to striker	20 mm
F	Centre-line to top	30 mm
G	Hole centres	40 mm

Request drawing for panel-piercing required.



1/29072

ORDERING CODE

1/29072	Push-button lock, 'FT' keys
1/29072/01	As above, FTIII Key
1/29073	Push-button lock, plain button

61A

PUSH BUTTON LOCK WITH SLAM-ACTION

This is a useful lock for lids and compartments, which slams shut and is opened by pushing the front button. It is easily fixed and can accommodate some variation in panel thickness.



Lock slams against panel edge or striker, opens with gentle pressure on front face. Key turns 180° to block button.



Insert from rear into panel cut-out, fit bezel onto threaded 'neck' and tighten using circlip pliers or similar tool. Large nut allows adjustment to suit panel thickness.



'FS' keys only, non-locking model available.



'FS' keys only, chrome bezel and stainless steel button.

'PUSH-BUTTON LOCK WITH 'SECURITY' ACTION

This lock was developed to prevent accidental opening of compartments where movement and vibration are involved. It slams against a suitable rod or loop (3mm diameter), and is opened by pushing the front button. The rotary 'claw' provides much more secure fixing than a slam-bolt lock.



Lock slams against striker, opens with gentle pressure on front face. Key turns 180° to block button.

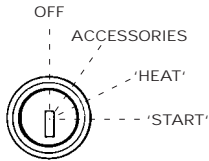


Insert from rear into circular panel cut-out, fix through front flange. A large chrome finishing bezel screws onto threaded 'neck' for good appearance and allows some adjustment for panel thickness.

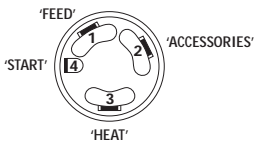


'FT' keys only, non-locking model available.

SWITCH POSITIONS - FRONT VIEW



TERMINAL POSITIONS



1/06280
Ignition barrel



Ignition switch
with assembled
lock barrel, bezel,
and special
'customised' key



'SNAP-IN' IGNITION LOCK BARRELS & SWITCHES

These are well-known 'Lucas' key-operated 24 volt rotary switches, suitable for commercial, agricultural and industrial uses. The model shown suits diesel engines, with the most commonly used terminal configuration, many other versions available.

WBH ignition barrels have a spring-loaded plunger, allowing 'snap-in' fitting. They can be supplied to special key number, allowing ignition to be matched to a full vehicle lock-set. 'Shuttered' head for weather-protection when required.



Key is inserted to unlock, turned through the 'accessory' position and against a strong return spring for 'heat' and 'start' operation.



Switch fits from rear through a pierced aperture and is retained by nut, spring washer and trim-bezel. Lock barrel is 'snapped-in' and can be released through hole in side of switch housing.



'FS' & 'FT' as standard with 'shuttered' head if required. Optionally, '92' or 'DLP' key types.



Many other types of 'Lucas' switch are available on request, including tool-operated and 12-volt models, in three, four and five-position versions.

'BUTTERFLY' IGNITION BARREL

This clever design allows for easy operation (with gloved hand) and provides support for the key to prevent breakage in the lock. It will fit all 'Lucas' switches.

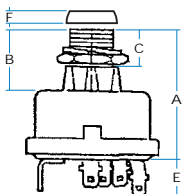
ORDERING CODE

5/02090	Ignition switch only (35640D)
1/06280	'FS' ignition barrel, non-shuttered
1/07906	'FS' ignition barrel, shuttered
1/09280	'92' ignition barrel, non-shuttered
1/09151	'FT' ignition barrel, shuttered
5/02136	Deep bezel (optional)
5/02336	Standard Lucas bezel, chrome

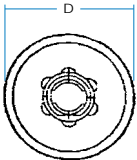
SPECIFICATION

A	Total switch height	56 mm
B	Boss height	29 mm
C	Thread height	16 mm
D	Base diameter	54 mm
E	Terminal projection (max)	16 mm
F	(Deep) bezel height	6 mm
G	Head, diameter	19.6 mm
H	Across 'flat'	18.4 mm

Maximum current recommended at 'start' is 16.5 amps. Electrical connectors are 'Lucar' blade terminals.



The special 'deep' bezel must be used with the 'FT' barrel, 1/09151



ORDERING CODE

7/27693	'Butterfly' ignition barrel
9/01874	'Butterfly' barrel, non-locking

The butterfly barrel is only available in the 'FS' key series.



7/27693
Ignition barrel
with chromium-
plated 'butterfly'
head



515547
Shown with
'customised' keys

ORDERING CODE

- 515547 Steering lock, 'lateral-pin' keys
515544 Steering lock, 'conventional' keys

Other types of lock are available as shown below:

Yoke-mounted models

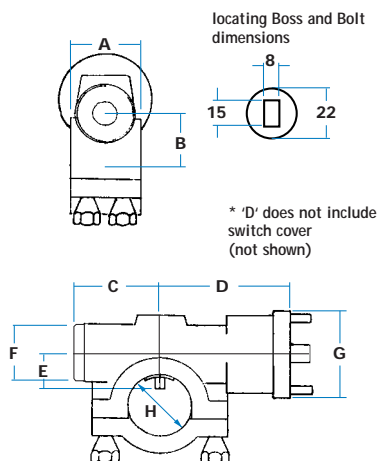


Side-mounted models



515595
Shown with
locking bolt
extended

SPECIFICATION



A Body width	45 mm
B Height (centre to base)	33 mm
C Length (face to centre)	45 mm
D Length (centre to rear)	64 mm*
E Height (centre to bolt)	21 mm
F Diameter, faceplate	30 mm
G Diameter, switch housing	55 mm
H Diameter, yoke	45 mm









Bolt projection when locked 9 mm

24-volt Lucas switch ref. 500922, with 4-off twin terminals for standard connectors (consult engineering drawing for switch positions).

00
1
A

STEERING COLUMN LOCKS, 'IN-LINE' MODELS

This robust lock provides protection against casual theft and unauthorised use of trucks and specialist vehicles. Installed as an OE fitment, it is clamped around the steering column (45 mm dia) and incorporates an ignition switch at either 12V or 24V.

-  High-security double-sided key, choice of switches with easy replacement if necessary and moulded terminal cover.
-  When key is removed the locking bolt will engage into a slot in the steering column, preventing movement.
-  Key enters, is turned 60° to withdraw locking bolt and activate "accessories" circuits, then a further 60° to "start", returning by spring-action to "run" position. A blocking device prevents accidental engagement of bolt while the engine is running.
-  Secure by 4-off "shearhead" bolts, which are then snapped-off to prevent removal.
-  Lateral pin-tumbler lock with 3500 combinations. Alternatively, conventional pin-tumbler lock (with 'FR' type single-sided keys).
-  As-cast or zinc-plated finish, with satin chrome faceplate.
-  Zinc-diecast body, brass lock cylinder, steel locking bolt, moulded switch cover.
-  - Alternative switches
- Specified key numbers